

Albany Old Times



Albany Regional
Museum

a quarterly publication

Summer 2000

136 Lyon Street South
Albany, Oregon 97321-2794
(541) 967-7122

Free admission - donations welcomed

Open Monday thru Saturday
12 noon—4 pm

Tours available at other times
by calling (541) 967-7122



Officers

Jerry Brenneman, President
Russ Sprague, Vice President
Rebecca Bond, Secretary
Charlie Bottomley, Treasurer
Carol McKay, Cataloguer

Board

Lois Bottomley
Mike Briggs
John Buchner
Margo Coleman
Armando de Rueda
Jack Gillespie
Eugene Mroczko

Staff

Nellie Wilson



Contents

President's Message	Page 1
Museum Receives Grant	Page 1
Looking Back	Page 2
Carol's Corner	Page 2
Membership	Page 3
Donors	Page 3
Call to ARM's	Page 3
Whirlwinds Wanted	Page 4
Annual Meeting Notice	Page 4

President's Letter

It hardly seems possible that 13 months have passed since we began work on the inside of our new museum building. If you haven't been inside since the hardware store moved out, you are in for a big surprise!

Many volunteers have been hard at work these many months and have transformed the building inside, making an attractive and informative museum featuring Albany's past history and events. We are now open each day, except Sunday, from 12-4 p.m.

Almost 100 people attended our donor-appreciation dinner in August, touring the museum, eating at tables set throughout the inside as well as the outside. We so much appreciate the help we have received in donations of time, money, supplies and equipment. Without you, we would not have been able to accomplish what we have over the past year.

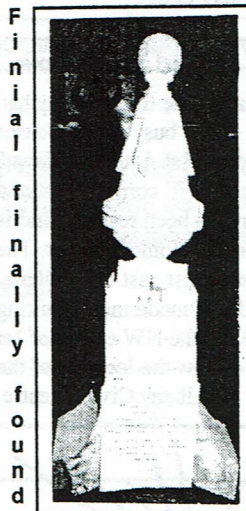
Come to our Grand Opening celebration on Saturday, September 9, 2000 from 12 noon on into early evening. While we might not be completely finished with what we want to do, remember that we will always be adding to, creating new exhibits and updating our equipment and facilities. You will be able to tour our mezzanine office and the upstairs storage area as well as the ground floor exhibit areas during our Grand Opening.

A big Thank You to the many individuals, families and businesses who have recently become museum members. We need your continuing support in the formative and growing years in our new building.

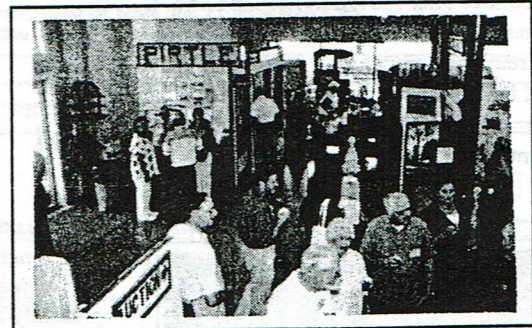
Be sure to attend our annual members' meeting set this year in our new home for Tuesday, November 14, 2000 at 7 p.m.

Thanks again for a great year.

Gerald Brenneman, President

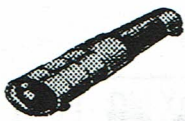


and returned
to rejoin its base



Donor dinner attendees peruse the current exhibits

*You are cordially invited to the
Grand Opening
of the
Albany Regional Museum
Saturday, September 9, 2000, 12 noon*



Looking Back

by Jack Gillespie

1938 - An Eventful Year

Even though the country was in the midst of an economic depression and wars were exploding in Europe and Asia, the year 1938 saw many decisive happenings in the City of Albany; a few of these are still as significant to us today:

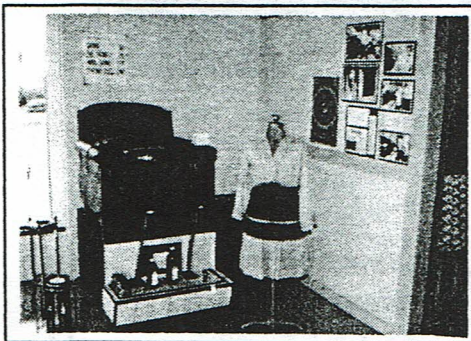
March 1938 - the State Highway Dept finalized its South Santiam Hwy (now Pacific Blvd) plan to have Hwy 99E bypass downtown Albany thru which it then traversed. The 3-mile stretch of highway and overpass was completed in 1940. With the opening of the I-5 freeway in the early 1960s, interstate travel decreased; however Pacific Blvd. had become the major traffic artery for the ever-growing City of Albany.

April 1938 - Linn County citizens voted approval of a new Linn County Courthouse in Albany. Completed in 1939, it is still in use.

- The City of Albany purchased land on the SE corner of Jackson and 8th Ave. upon which the City built the Swanson community swimming pool. The pool is shut down at present with little chance of reopening due to overwhelming, needed repairs.

- The first—and the last—airplane landed in Albany for the purpose of picking up local letters and parcels for Air Mail Delivery. The stop was part of an experiment by the U.S. Postal Service testing the feasibility of an Air Mail Service for Oregon.

June 1938 - Twenty students graduated at the last Albany College commencement exercise. The college later moved to Portland and was renamed Lewis and Clark College. The buildings remained empty for a number of years until local officials convinced the Federal Government to locate a Bureau of Mines Department at the West Albany location at 15th Ave. (now Queen Ave.) and Broadway.



Shoe shine parlor - a First Ave. landmark for many years

Albany Regional Museum receives \$20,000 Grant

The Oregon Heritage Commission has approved a grant of \$20,000 toward the additional improvements on our museum location. The Albany Regional Museum must match that grant. All the funds are to be used for the brick repointing of the north wall, the repainting of the building exterior and a new roof. The total budget for this work is \$72,524.

We currently have an additional grant request pending for \$27,200, the amount we will require to complete this phase of our development.

We anticipate starting the brick repointing and building painting in the very near future. The roof replacement will begin as funds become available.

Charlie Bottomley, Finance Chairman

Did You Know...

...that 1st Ave through downtown Albany was once part of the 99E Hwy? Until the opening of the Pacific Hwy. Bypass splitting east and west thru South Albany in the late 1930s, Main St., 1st Ave, Washington St., 6th Ave. and Elm St. were all part of the 99E Hwy. system, superceded as an interstate highway by the present



Artifacts Are Accepted

gratefully during our daily hours.

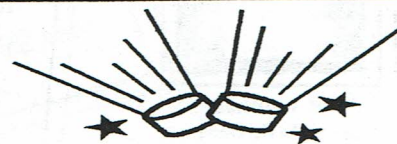
All items complement/supplement current files/exhibits and/or provide material for future exhibits.

Our thanks to those who have donated artifacts to date.



Did You Know...

....that at one time Albany had three busy movie houses on the north side of 1st Ave. downtown? The *Venetian* on the NE corner of 1st and Broadalbin has been restored and is presently a live entertainment center. The *Granada*, located just east of the Venetian, was razed and made into a parking lot. The *Rialto*, on the NW corner of 1st and Lyons, is now the location of the Albany Civic Theatre.



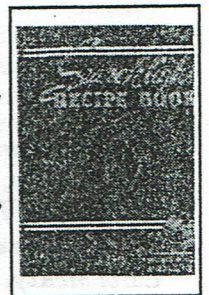
Carol's Corner

by Carol McKay

Cookbooks came from everywhere. The *White House Cook Book* I quoted from last time was widely circulated. First copyrighted in

1887 by F. L. Gillette, it was dedicated to the wives of our presidents. Two contributors were acknowledged: Mrs. F. L. Gillette and Hugo Ziemann. It is a "comprehensive Cyclopedia of information for the Home" containing cooking, toiletry and household recipes, menus, dinner-giving, table etiquette, care of the sick, health suggestions, facts worth knowing, etc. So it was not just a cook book. It was likely consulted on a daily basis, sometimes for cookings, sometimes for medicinal reasons, or sometimes to check for correct etiquette when company was coming for dinner.

A more recent book is *The Household Magazine Searchlight Recipe Book*, copyrighted in 1931, 1937 & 1946. A Topeka, Kansas family publication, *The Household Magazine*, sent out 1,000 questionnaires to their readers to gather recipe information that would meet the needs of the homemaker. Various commercial and home kitchens tested the recipes. More about this book next time.



It's time for the recipe, again from the *White House Cook Book*:

Pearl Tooth Powder

Prepared chalk half a pound, powdered myrrh two ounces, camphor two drachms, orris root, powdered, two ounces; moisten the camphor with alcohol and mix well together.

Let me hear from you out there. Bring in your old cookbook to

Carol's Corner

c/o ARM,
136 Lyon St. SW,
Albany, OR 97321-2794

Next time, I'm going to print my favorite recipe which I do use from the *White House Cook Book*.

Did You Know...

...that the Albany Regional Museum is affectionately known as ARM?



Thank You for Your Membership

Thanks to your overwhelming response to our membership drive, the museum now has 182 members, including businesses, individuals and families. Your membership dollars help pay for the costs of maintaining the museum building including heat, electricity, water and sewer. Membership dollars also offset administration costs incurred by developing and distributing the quarterly newsletter and keeping the museum open six days per week.

The Albany Regional Museum membership drive began in May 2000. Individuals and businesses were sent information about membership by mail or contacted directly by museum volunteers. Our goal was to reach 100 members by August 1, 2000. The museum board held a contest to see who could solicit the most members. A tally was kept and *Lois Bottomley* held the record with *Nancy Daniels* coming in second. Thank you *Lois*, *Nancy* and the other museum volunteers who helped to spread the word!

If you are not yet a member, please consider joining. As a member, you will be given a membership card that will entitle you to receive a 10% discount on all purchases made in the museum gift shop and museum sponsored events.

You will have the right to vote on incoming board members at the Annual Meeting coming up November 14, 2000. You will also continue to receive this quarterly newsletter with museum information, interesting facts and special dates to put on your calendar.

(continued next column)

Thanks to the following

for their contributions of time, materials and money to our museum since the last edition of our newsletter:

Target Stores	William Origer, M.D.
David Blake	Shields Instant Printing
S.O. Seida CPA	The Recycling Depot
N.O.W. Builders	McKay Truck & R.V. Center
Bob Johnson	Flynn's Living History Theatre
Jardin Farm	The Beanery I-5 Cafe
Russ Tripp	Vogt's Nursery
The Frame Shop	Walker's Nursery
M. Ruthruff	Lynn & Jim Powers
Randy Tripp	John Buchner
E. Ruthruff	E. Rutherford



Prudent pioneer women dressed simply and protectively - the long sleeves and skirt to protect against abrasive vegetation and large bonnet to protect the face and neck from the sun.

Note: This clothing and others need protective viewing cases and mannequins. Can you help?

Membership continued ...

The museum has become a community project with volunteers contributing 2,844 documented work hours and over \$30,000 in labor and materials. To maintain this new building and preserve the cherished artifacts, we need your continued support.

Please take a moment to fill out the membership form below and mail it or bring it in to the museum.

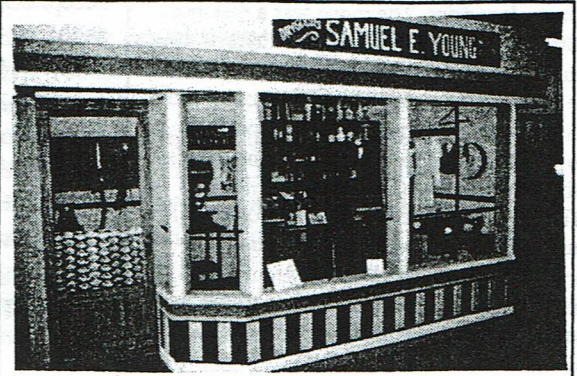
Rebecca Bond, Membership Chairman

Call to ARM's

We welcome everyone to join our family of volunteers. Just could be your knack fits our needs. We can find a niche for you.

Call me and let's see what we can do.

Margo Coleman, Volunteer Chairman
928-1961 or wise-eyes@proaxis.com



The Samuel E. Young Store exhibit displays merchandise items of the early 1900s. S. E. Young was the original occupant of our museum building.

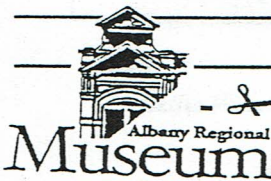
Did You Know...

...that less than 40 years ago in Albany, you could light up a cigarette and snuff it out about anywhere at anytime you desired to; but if you uttered even the mildest "cuss word" in public, you could be arrested and subjected to a fine or jail time?



The Albany Regional Museum is a non-profit 501-C3 organization recognized by State and Federal statutes, thus all donations are tax-deductible to the fullest extent of the law. Our tax number: 93-079-2313.

*** For further information/tours/donations/to volunteer, phone (541) 967-7122 ***



Membership Form

I would like to become a member and receive the quarterly newsletter *Albany Old Times* and a 10% discount on all Albany Regional Museum purchases and events.
Annual membership is effective June 1 to May 31

Business \$50/yr Family \$15/yr Individual \$10/yr

Name _____

Address _____

City, State, ZIP _____ e-mail _____

Phone _____

Make check payable to Albany Regional Museum. Mail or bring in to 136 Lyon St. S., Albany, OR 97321-2794.

Thank you



Did You Know...

...that the Albany Regional Museum building originally housed the S.E. Young Co. at 1st Ave. and Broadalbin (the current location of the Wells Fargo bank)?

Built in 1887, the two-story building was moved in 1912 to its present location at 2nd Ave. and Lyon St., formerly "Chinatown" with its many laundries. The move was a distance of three blocks and took a team of horses and men 13 days (May 29-June 10) to complete. The building was so wide that the power and light company had to remove some poles to allow the building to pass through the streets, without structural damage to the building.

The building subsequently and sequentially housed a farm store, grocery store and hardware store on the ground floor. A congregation, as well as Sea Scouts, met on the second floor. It has also housed an archery range, a pool hall and the Monarch Cafe.

Purchased in July 1999 by the Albany Regional Museum following a generous donation from Bill and Doris Scharf, the Museum has realized many volunteers and donors who have provided the means to make the Albany Regional Museum what it is today.

excerpts from *Albany Weekly Democrat*, June 21, 1912



**WHIRLWIND
Annuals
Wanted**

In order to complete our library of copies of WHIRLWIND annuals, we need the years 1931-1935 and 1942-1963. We will be most happy to accept other years' annuals as well as the newspapers by the same title.



~~~~~  
**Have you checked  
out the Museum's Research Room  
lately? It's ready when you are.**



**Camp Adair - the largest city in Oregon in 1944 - housed 50,000 soldiers preparing for overseas duty - Exhibit displays bunks, clothing, gear, etc.**

**Notice**

**The Albany Regional Museum  
Annual Meeting**

will be held

**Tuesday, November 14, 2000, 7 p.m.**  
at 2nd & Lyons

Annual Report and Elections on the agenda

All members are encouraged to attend

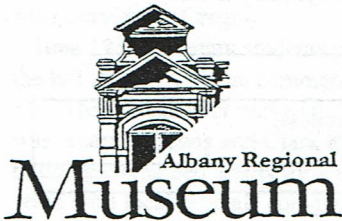
Public invited to attend

**Did You Know...**



...that prior to the advent of the automobile and the school bus in rural Albany, there was at least one school every six miles so that students would not have to walk or ride their horses over three miles to attend?

\*\*\* For further information/tours/donations/to volunteer, phone (541) 967-7122 \*\*\*



136 Lyon Street South  
Albany, Oregon 97321-2794  
(541) 967-7122

NONPROFIT ORGANIZATION  
U S POSTAGE  
**PAID**  
PERMIT NO 166  
ALBANY OR 97321

*You are cordially invited to the  
Grand Opening  
of the  
Albany Regional Museum  
Saturday, September 9, 2000, 12 noon  
2nd Avenue & Lyon Street*